

HOUSE & GARDEN[®]

SOUTH AFRICA



December '24 /
January '25
R85 (incl. VAT)
Other countries
R73.91

Finding SANCTUARY

Indulge in the BEST NEW SPAS | The indelible ART OF ENTERTAINING
Local & GLOBAL INTERIORS to covet | Explore MUST-SEE LOCALES



With spaces that honour traditional elements and local artisanal skills, Saudade is an archipelago oasis for the discerning traveller

text CATHERINE MO photographs ELSA YOUNG

The Bazaruto archipelagos might be remote, but this Mozambican outpost has all you need to eat and drink well, and live a slower, considered life.

TREASURE ISLAND







With a 180-degree view of the entire archipelago, guests are spoiled with a look over every island – all the way from the Sanctuary and past Bazaruto where the water changes colour.

Perched above the sweeping white sands of Mozambique's Bazaruto Archipelago, Saudade is a testament to thoughtful design, local heritage, and architectural mastery. Created by Sarah and Mike von Hone, this extraordinary lodge reflects their deep connection to the region and their shared passion for creating timeless, luxurious spaces. Drawing inspiration from their neighbouring property, Villa Coco, and decades of family memories, Saudade embodies the essence of the six-island archipelago, its landscapes, culture and history.

The architecture of Saudade is a harmonious fusion of contemporary sophistication and traditional Mozambican influences. Delicately nestled within the white sand dunes, it blends effortlessly with the surrounding natural vegetation of

mangrove trees meadows. Its design minimises environmental impact while capturing the stunning seascapes and vibrant atmosphere of the protected archipelago. Locally sourced materials, including timber, thatch and other artisanal finishes take centre stage, showcasing the local community's rich craftsmanship. Every element, from hand-carved woodwork to the striking thatched roofs and grass walls, reflects an authenticity that honours the setting.

Inside, one experiences the perfect balance between communal connection and serene solitude. The seamless integration of indoor and outdoor living spaces invites you to engage with the surroundings. A covered patio, the heart of the home, offers panoramic views of the aquamarine lagoon and the archipelago islands. Here, the interplay of light and the tides



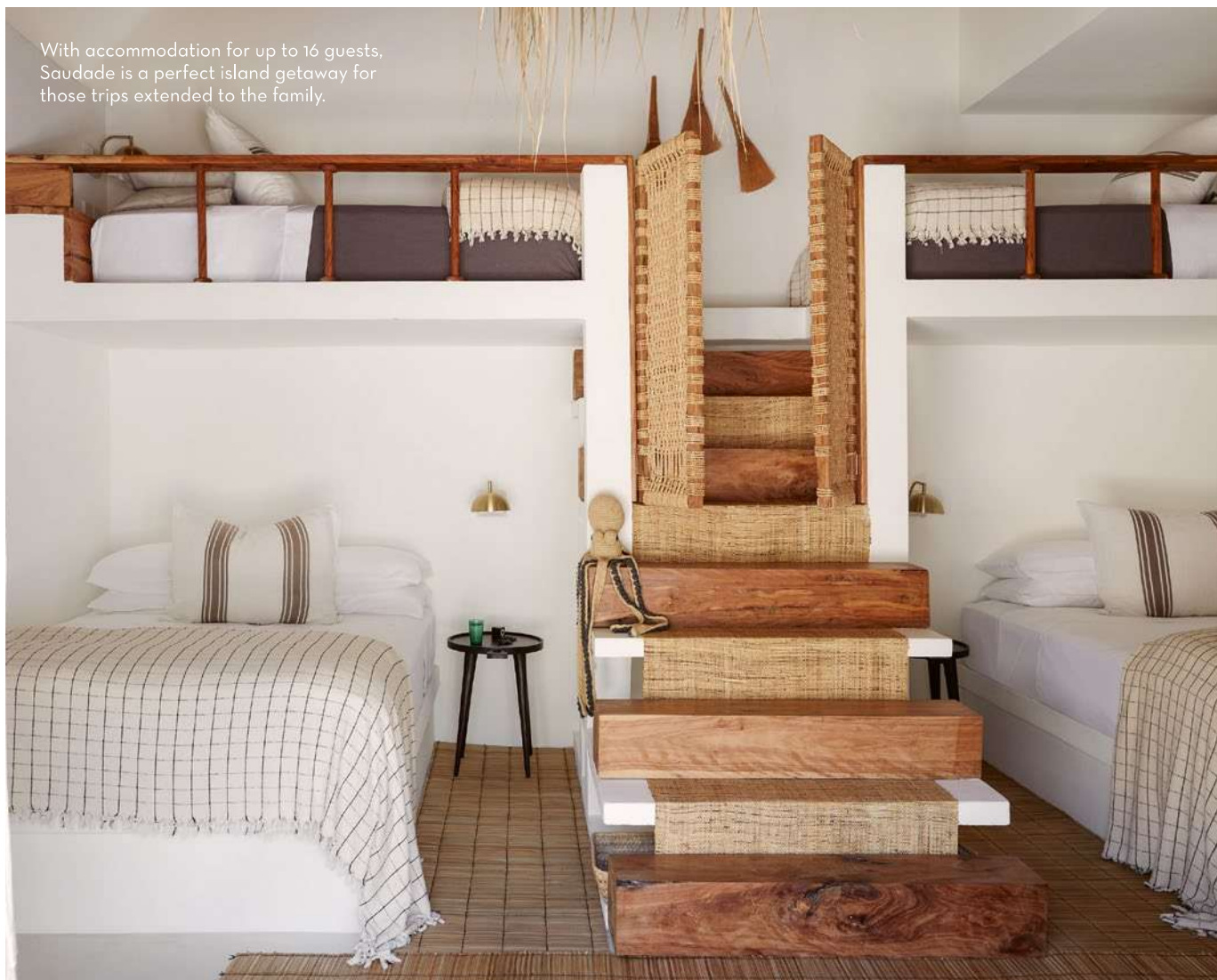




Local knowledge and skilful craftsmanship are infused into the home including hanging lights, wall hooks, and even the woven thatch roof, which took months to perfect.



With accommodation for up to 16 guests, Saudade is a perfect island getaway for those trips extended to the family.



‘Saudade invites guests to RECONNECT WITH NATURE, REVEL IN THOUGHTFUL DESIGN and become part of the archipelago’s narrative’

creates an ever-changing kaleidoscope of colour. Each suite and communal area has been thoughtfully positioned to optimise these vistas, ensuring the beauty of the environment is always front and centre.

The story of the archipelago is deeply woven into Saudade’s design. Bazaruto’s history as a protected conservation area and sanctuary for marine life inspired the owner’s commitment to sustainability. From the use of locally sourced materials to its alignment with ecotourism initiatives such as Indigo Seahorse Adventures, Saudade embraces its responsibility as a steward of this natural treasure.

Sarah’s attention to detail is evident throughout, from the tactile textures to the handcrafted elements that celebrate Mozambique’s artistic traditions. The lodge doesn’t just offer a luxurious retreat, it also tells a story — one of heritage, sustainability and unparalleled beauty. Saudade is a hideaway that invites guests to reconnect with nature, revel in thoughtful design and become part of the archipelago’s incredible narrative. This is a place where nostalgia and luxury meet, leaving visitors enchanted and eager to return.

📍 saudademozambique.com

For bookings, visit 📍 perfecthideaways.co.za

More than a property honing in on the unique qualities of the archipelago, Saudade harnesses a creation of good energy, from the building process to locally-produced elements.

